



# RAIL REPORT

December 2007

No. 576

Rocky Mountain Railroad Club • Rocky Mountain Railroad Historical Foundation

December 11, 2007 • 7:30 PM

**Annual Meetings Of The  
Rocky Mountain Railroad Club and the  
Rocky Mountain Railroad Historical Foundation**

**Two Short Digital Programs  
Mel Patrick's *Night Vision* and  
Mike Danneman's *Cold Enough to Snow***

Please come join us for an enjoyable, educational evening at Christ Episcopal Church at 2950 South University Boulevard, University at Bates, where there is plenty of off street parking at the rear of the complex. Enter into Barnes Hall, where we hold the monthly meetings, on the mid-south side doors. Please bring a guest.

**All programs are intended to provide an educational experience on railroading. The general public is welcome to attend. There is no charge for this meeting.**

## RMRRRC Calendar

January 8, 2008 Meeting	To Be Announced
February 12, 2008 Meeting	To Be Announced
March 11, 2008 Meeting	To Be Announced
April 8, 2008 Meeting	To Be Announced
May 13, 2008 Meeting	To Be Announced

The Club's future program listing is limited to three or four months. This will provide members adequate advance information for planning. Proposed 2008 meeting dates are shown. Due to circumstances beyond our control programing and dates are subject to change without notice. Please contact Joe McMillan at [jmcmillan20@comcast.net](mailto:jmcmillan20@comcast.net) or phone 303-456-4564 with program ideas.

## Notice Of Annual Meetings

The annual meetings of the Rocky Mountain Railroad Club and the Rocky Mountain Railroad Historical Foundation will be held on Tuesday, December 11, 2007, 7:30 PM at Christ Episcopal Church, 2950 South University Boulevard, Denver, Colorado. These meetings are called for the purpose of electing Officers and Directors for both organizations. At these meetings the Club or Foundation may conduct any other business as may properly come before these meetings.

---

### From the President

By Jim Ehernberger

At our November meeting, the video program presented by Sherm Conners, and the power point presentation by Joe McMillan was well received by everyone in attendance. The meeting room was well packed. I am sure anyone who has not ridden on the La Veta pass operation may wish to do so next year. Thank you Sherm and Joe for these fine programs.

In addition to various Colorado and Utah tourist railroad operations, I have been reminded that in the Black Hills (an easy day of driving from Denver) a tourist train at Hill City, South Dakota utilizes the only true mallet steam locomotive operating in the USA. Don't forget to support the various railroad museums. You may be surprised at some the rare items on display and the fine variety of collections assembled.

Looking back over 2007, obviously, the year has moved by very quickly. We managed to have many fine programs and events. Joe McMillan has been in charge of programs, and we had outstanding presenters as a result. Our thanks to Joe, and to all of those presenters during 2007. We are looking forward to future programs already committed for 2008.

The field trip to Como (handled by Pat Mauro) was extremely successful with a large turnout, and we are considering another one during the summer of 2008. The exact location has not been determined, but whatever is planned will probably be close to the Denver area, especially in view of higher fuel prices, and to avoid lodging expenses.

The Club is a volunteer organization. Without volunteers we could not operate – in other words, we would be “derailed” and could not function. These responsible people volunteering help make our organization run as smoothly as clock work.

Communication to membership, of course, is through the *Rail Report*, and Bruce Nall handles that with professionalism, along with materials Chip Sherman, and others provide. Not everything makes it into print, but Bruce tries to keep a balance in an effort to appeal to a wide variety of interests. Without the help of Bruce and Chip we would be searching around a lot more and we appreciate what they do.

There are those involved with the former Denver & Intermountain Car

## From the President

No. 25 project, a long restoration project involving so many dedicated members and friends. We are working hard to have this project completed in 2008. It will have been twenty years since the project started. Many thoughts have surfaced regarding future plans, and, there are several ideas and options involved. Two key points: it would require adequate protection, and it most certainly needs to be available for public exposure and viewing as originally intended by those persons responsible for saving this item some fifty-plus years ago. We do appreciate all of those volunteers (headed by Darrell Arndt), past and present, for their hard work and time devoted getting this rare piece of equipment into its present immaculate condition.

Fundraising efforts to complete the Car No. 25 restoration (as well as covering expenses to have an inside facility for storage and work) is a continuing process. Up to this point we have not reached our fundraising goal of \$10,000, and if this becomes a problem in the future, financial demands may dictate needs for a change sooner than later. Jean Gross has been involved in this effort for many years, and has shown personal interest as a driving force for completion of the car in 2008. If you have not contributed, it is not too late, as we appreciate any amount we can obtain toward this goal.

We were very fortunate getting so many fine donations of books and other railroad material that it gave us a real shot in the arm at the annual roll-out of Car No. 25 in August bringing in over

\$2,000 in revenue toward the restoration project. Thank you very much for these items, and if anyone else wishes to "down-size" let me know and we will be happy to arrange to pick up whatever you wish to let us have. We plan to have another sale in 2008.

The Club was founded in 1938, and plans are in the works to celebrate our 70th anniversary during 2008. Among these plans, of course, is the completion of Car No. 25, and the annual luncheon / banquet in the fall. Other events will be announced in future issues of the newsletter.

During 2007 I leaned on Herb Edwards, Club Vice President, since I live outside of the Denver area and the distance can present a few problems. Herb has been very good to work with, and we accomplished making a move into a smaller storage facility to save money. Herb was also responsible for the Annual luncheon / banquet details.

It is easy to take some things for granted, but the most responsible position in the Club is that of Treasurer. Whether it is payment of bills, receiving annual dues, video and book sales, banquet requests, or the Foundation fundraising, making deposits and reconciling bank statements, we are fortunate having Jimmy Blouch in this position because he is precise in this area. The Club extends our appreciation to Jimmy for his hard work keeping our finances in proper order.

Another task requiring considerable time is handling the membership

## From the President

records. Michael Tinetti volunteered to take that chore on, and has managed this function quite well during the year. This not only involves renewals, but keeping address changes up-to-date, making lists, preparing labels for newsletter mailings, and any other requests that may be part of Club business. We are grateful for the time and energy he has put into this task.

The board could not function without a good Secretary, since recording of meeting minutes are very important. Roger Sherman produces these documents within a day or two after our meetings, while things are still fresh in our memories. Roger has served faithfully for several years in this position, and of course, we need to personally thank him for a job well done.

There are many other people that volunteer. Dave Gross likes to work on video projects, and was responsible for the Otto Perry presentation for the annual luncheon / banquet, working with Ed Gerlits as narrator. The production of Club videos in recent years, thanks to Dave's guiding hand, is the reason for their releases. This is a case of making these subjects available to the public, rather than keeping them locked in storage somewhere.

I would say it is enlightening to see so many members turning out for our meetings, and attending the functions, and "hanging in there" to keep this organization alive. Our board members have been active and willing participants to pitch in whenever the need arises. All of this is positive, and we are looking forward to a good 2008.

In the meantime, consider coming to the December meeting. We will conduct business, have a two great winter presentations and enjoy a little time afterwards to socialize over cookies and punch.

Thank you, one and all, for allowing me to serve as President during 2007. On behalf of the Club, I am sending you a train load of best wishes for the upcoming Holidays.

If calling on the telephone, please identify your call as "Railroad Club Business" so I will know your call is not a telemarketer. 7 to 9 PM is preferred.

Members may contact me at:

RMRRCPresident@sisna.com

Phone: 307-637-4011

Rocky Mountain RR Club – President

PO Box 2391

Denver, CO 80201-2391

---

### Membership Renewals For 2008 Are Due December 31, 2007

Please use the membership dues renewal form in the November *Rail Report* or renew on the web at: <http://www.rockymtnrrclub.org/membersp.htm>

Please consider upgrading your membership to provide additional financial support to the Club. Membership cards are scheduled to be mailed early March 2008.



No. 25 at the open house and rollout on 8/18/07. – Photo © 2007 Bruce Nall.

## List Of Donors Continues To Grow Slowly

By Jean Gross

Continued support for the restoration of Car No. 25 is evident by the list of people that have given to the Foundation's goal of \$10,000.

Thank you to the following people:

Charles Albi, Richard Burkholder, Mark Crutcher, Gerald Deucher, Frank Fuller, Richard Gamewell, Alan Gass, David Goss, Steve Haynes, Robt. Lashell, Fred and Rita Lochner, Gordon McCulloh, Ken Milne, S. Martha Montevallo, Al Morrison, David Rainey, Dan Sherer, Lynn Yehle, Tom Young, Philip Woeber.

The project also received \$25.00 from Xcel Energy's 4Charity Foundation, Inc. as a match to an employee's online

request to the employer, Xcel. The individual involved was not named. Thank you for thinking of company matching contributions.

At this time, the amount that has been raised is not enough to cover the basic expenses of housing and finishing Car 25 for the next year. As we approach the end of 2007, please keep in mind that The Rocky Mountain Railroad Historical Foundation is a 501(c)(3) organization and all donations may be listed as charitable contributions on Federal income tax returns.

We listed a name incorrectly last month. Thanks again to Thomas Shugrue.



Rocky Mountain Division of the North American Rail Car Operator's Association members in the LC&S Railroad yard. – Photo © 2007 Gus Mocilac.

---

## Motorcars on the Leadville Colorado & Southern Railroad

By Gus Mocilac

Eleven motorcars from the Rocky Mountain Division of the North American Rail Car Operator's Association (NARCOA) enjoyed a fantastic excursion at an elevation of 10,220 feet on the LC&SRR the weekend of October 6 and 7, 2007. The weather on Saturday was a bit windy but the temperature was not too bad for the Leadville area in October. We left Leadville for the end of track around 3:30 PM. At the end of usable track a few of us walked across the talus slope along the roadbed towards the next curve. We had a nice view of the Climax Mine and of Fremont Pass. We started our return trip and made a stop at the French Gulch water tank for photos, and then headed again for Leadville, arriving into Leadville around 6:30 PM.

We had dinner that evening at the Tennessee Pass Cafe. While having some good conversations and enjoying some good food, it began to snow. Well, here

comes that approaching storm. Let's see how much snow we would get!

Sunday morning was one sunrise that Mary and I will never forget. We had the window shade up and we were greeted by no snow accumulation and a beautiful sunrise! Mt. Massive and the rest of the Sawatch Range was snow covered and was reflecting the sunrise.

A balmy 28 degrees greeted our excursion on Sunday. All motorcars started up and most operators had covers on the Onan engines to prevent carb icing. We left Leadville at 9:10 AM, following the railroad's track crew who were inspecting the track for the daily train. Tracks started out nice and dry, but further up towards 11,000 feet the tracks began to get a bit icy. That was one different and strange experience to have the motorcar slip and slide over the icy patches. I began to sand the rails to keep traction.





Two motorcars on the LC&S rails with the Climax Mine in the background.  
– Photo © 2007 Gus Mocilac.

Everyone made it to the end of track despite the ice on the tracks! We again began our return trip back to Leadville with a stop to look at a discarded boiler left over from earlier days of the mining and logging that took place in the area.

Arriving back into the Leadville yard we had the switch thrown for the round-house area and proceeded to set-off our

motorcars. We were visited by the owners of the railroad. They were very impressed by the RMD and our safe operations on this excursion. The RMD has been invited back for further excursions and maybe a work party next year to open the tracks for motorcars to reach the real “end of track” on the Leadville Colordao & Southern RR.

---

## Special Events in 2008 on the Leadville, Colorado & Southern RR

The LC&SRR is planning Wildflower Special trains on July 19th and August 16th, 2008. See the alpine flowers at their peak, splashing the mountain world with vibrant color.

A Fall Photo Special is planned for September 20th, 2008. Get that special shot framed by Colorado's autumn beauty! A chance to get off the train at special locations to take pictures.

## Current Railroad Happenings — A Photo Gallery



Westbound BNSF Santa Fe red and silver warbonnet 612 West pulled the Lincoln, Nebraska, to Denver 52-car train out of Tonville Siding near Lochbuie, Colorado, for its next jump to the Barr Siding on 11/8/07.

— Photo © 2007 by Chip.



This is Kansas City Southern EMD SD70ACe #4038 in the new “Southern Belle” livery. It is red on top, black below, with yellow stripes. It is seen here leading the Denver to Kansas City high priority freight for the BNSF on 10/29/07.

— Photo © 2007 Dave Schaaf.



## Current Railroad Happenings — A Photo Gallery



BNSF's Lincoln, Nebraska, to Denver (train M LINDEN1 07) rolled west with two Santa Fe red and silver warbonnets arriving in Denver on 11/8/07. The worn BNSF 612 and 673 led a 52-car train. Its crew was changed at Keenesburg, Colorado. The train was held at Tonville Siding for a late Denver to Chicago, Z-train and a grain empty. – Photo © 2007 by Chip.



The crew is pulling their gear off of the lead engine of the Provo to Denver manifest that had just come into North Yard on 10/20/07. – Photo © 2007 Dave Schaaf.

## Rocky Mountain Railroad Club Annual Banquet

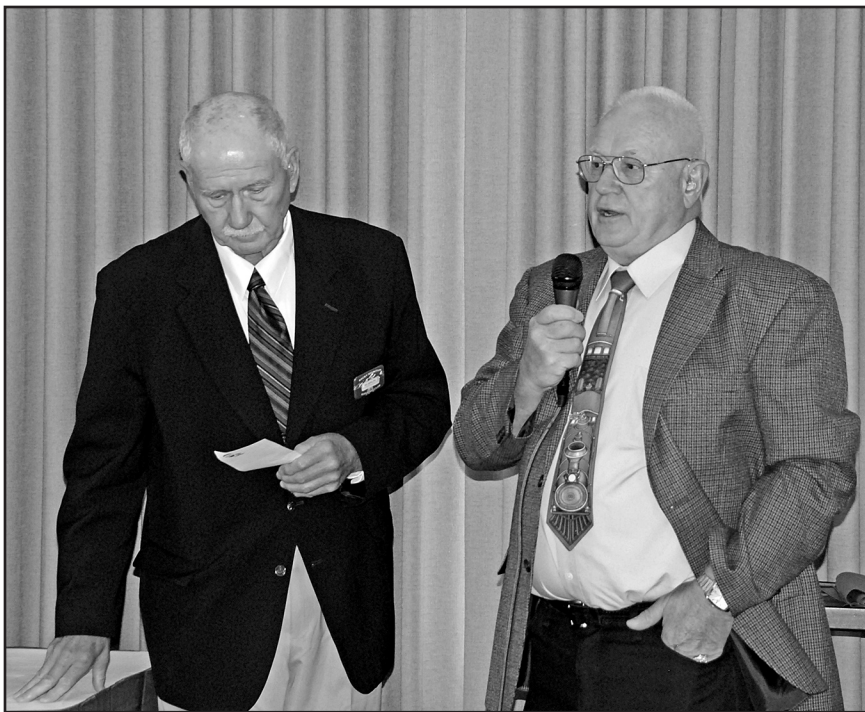


Carolyn and Jimmy Blouch handled the check-in table where guests picked up their tickets.



Guests included Jim Ranniger, past president of the RMRRRC (seated at right).  
– Two photos © 2007 Darrell Arndt.

## Rocky Mountain Railroad Club Annual Banquet



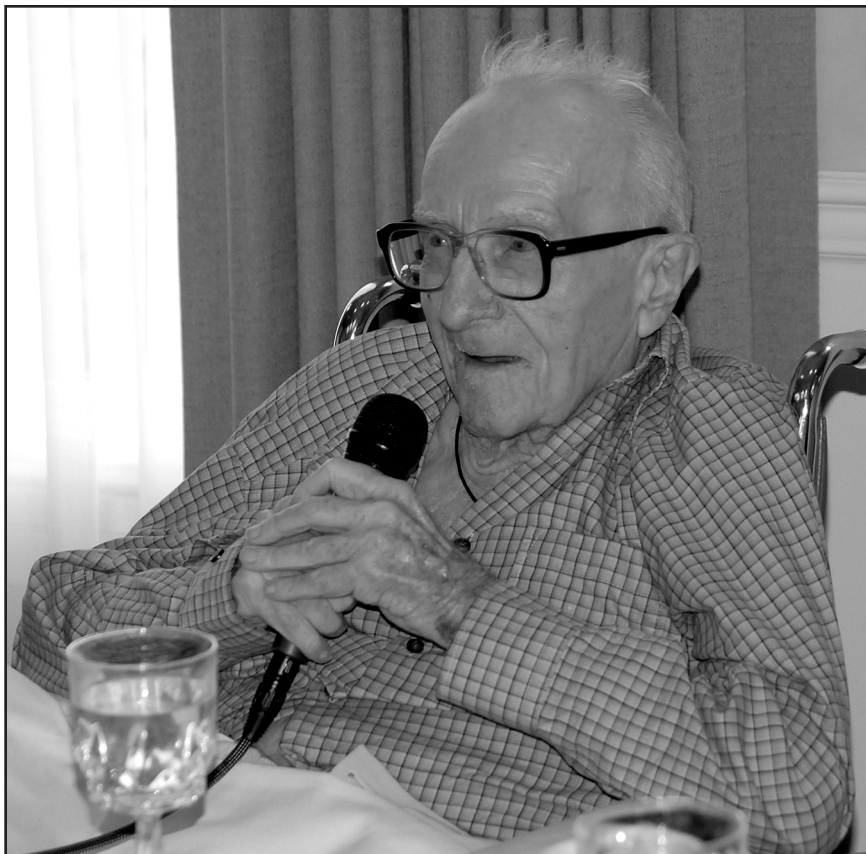
Ed Gerlits, program presenter (left) with Jim Ehernberger, Club President.



Ed Gerlits (with microphone at far left) presented and narrated the Otto Perry movies. Banquet coordinator, Herb Edwards is behind the projector.  
– Two photos © 2007 by Darrell Arndt.



## Rocky Mountain Railroad Club Annual Banquet



Richard Kindig talks about Otto Perry.



Banquet guests. – Two photos © 2007 Darrell Arndt.

## Rocky Mountain Railroad Club Annual Banquet



Ed Gerlits (left) with Irv August talking about Otto Perry.



Banquet guests. – Two photos © 2007 Darrell Arndt.



## Trains Unlimited, Tours 2008 Tentative Trip Schedules

Discounts on tours are available to Club members.

Just provide your Rocky Mountain Railroad Club membership number.

For TUT information call 1-800-359-4870

or visit our Club web page at: [www.trainsunlimitedtours.com/rmrrc/](http://www.trainsunlimitedtours.com/rmrrc/)

February 16-18	Snowflake Express	May 24 - June 3	Steam In Poland
March 15	Yosemite Express	June 4-16	German Rails
April 12	Domes Down The Valley	June 5-10	White Pass Railfan Spectacular
April 27-29	Arizona Rails	June 14	Pacific Coast Domes South
May 3-4	La Veta Pass Explorer	June 21	Domes to San Diego I
May 12-18	Western Maryland & West Virginia Railfan	June 25 - July 3	Great Britain Steam Adventure
May 24-26	Domes Over Donner Pass		

## Colorado Railroad Museum 2008 Scheduled

### Special Operation Days

For information call 303-279-4591

[http://www.crrm.org/train\\_trips.htm](http://www.crrm.org/train_trips.htm)

Bunny Express	March 22
Post Income Tax Days	April 19 - 20
School's Out Steam Up	May 31 - June 1
Father's Day Steam Up	June 14 - 15
4th Annual Wine & Cheese Event	July 19
Back to School Train	August 9 - 10
Political Whistle Stop Train	August 22 - 23
Day Out With Thomas	September
Halloween Train	October 25 - 26

Rocky Mountain Railroad Club Members in good standing, and upon presentation of a current membership card, are entitled to free admission. Members are invited to join the Colorado Railroad Museum (a Museum membership provides certain merchandise discounts), and members may participate in restoration or other maintenance programs as volunteers.

Please contact the volunteer coordinator at the CRRM, telephone 303-279-4591.

## Intermountain Chapter, NRHS

### 2007 Event Schedule

For information call 303-298-0377

<http://www.cozx.com/nrhs>

Friday, December 14, 2007: Holiday Dinner and a Movie at Rossi's Catering. *Christmas Trains: Christmas Trains of All Sizes Across America*. This Pentrex presentation seemed like a fun feature for this year's program. Pentrex captured the sights and sounds of nine different Christmas train displays, ranging from toy train layouts and garden railroads decorated with holiday scenes to full-scale trains pulled by steam locomotives and modern diesels draped in Christmas lights. Familiar Christmas music adds a cheerful note.

Dinner reservations only for the evening's events. Call the Chapter office at 303-298-0377. All reservations and cancellations must be made by Noon on December 14. If you must call Rossi's (303-296-1144), please be sure they take your name, along with the number in your party. Cash bar at 6:30 PM, dinner at 7:00 and the program starts at 8:00 PM.

## **Publishers Statement — Rocky Mountain Rail Report**

The Rocky Mountain Rail Report (ISSN 1040-9223) is published by the Rocky Mountain Railroad Club and the Rocky Mountain Railroad Historical Foundation.

First class postage paid at Denver, Colorado.

Postmaster, send address changes to:

Rocky Mountain Rail Report, PO Box 2391, Denver, CO 80201-2391

### **Club Information**

Rocky Mountain Railroad Club  
PO Box 2391  
Denver, CO 80201-2391

Web: <http://www.rockymtnrrclub.org>

### **Club Officers**

President	Jim Ehernberger
VP - Projects	Darrell Arndt
VP - Programs	Herb Edwards
Secretary	Roger Sherman
Treasurer	Jimmy Blouch

### **Membership Information**

Membership in the Rocky Mountain Railroad Club may be obtained by sending the annual dues to the Club address listed above.

Regular membership dues are \$35.00. Overseas regular membership dues are \$45.00.

Contributing membership is \$50.00. Sustaining membership is \$70.00.

Patron membership is \$100.00. Golden membership is \$500.00.

An associate membership for spouses and children is \$25.00 additional.

Members joining after April may send a payment of \$3.00 for each month remaining in the year.

Members of the Rocky Mountain Railroad Club are also members in the Rocky Mountain Railroad Historical Foundation, the non-profit arm of the Rocky Mountain Railroad Club.

### **Board Meetings**

Members are always welcome to attend any board of directors meeting. Please contact any Club officer for the date, time and location.

### **Newsletter Contributions**

Newsletter contributions and items for publication should be sent to:

Bruce Nall, Editor  
Rocky Mountain Rail Report  
PO Box 620579  
Littleton, CO 80162-0579

Fax: 303-978-0402  
E-mail: [selectimag@aol.com](mailto:selectimag@aol.com)

**Items for the January Rail Report should be sent by December 12th.**



BOX 2391  
DENVER, COLORADO 80201

***FIRST CLASS***

